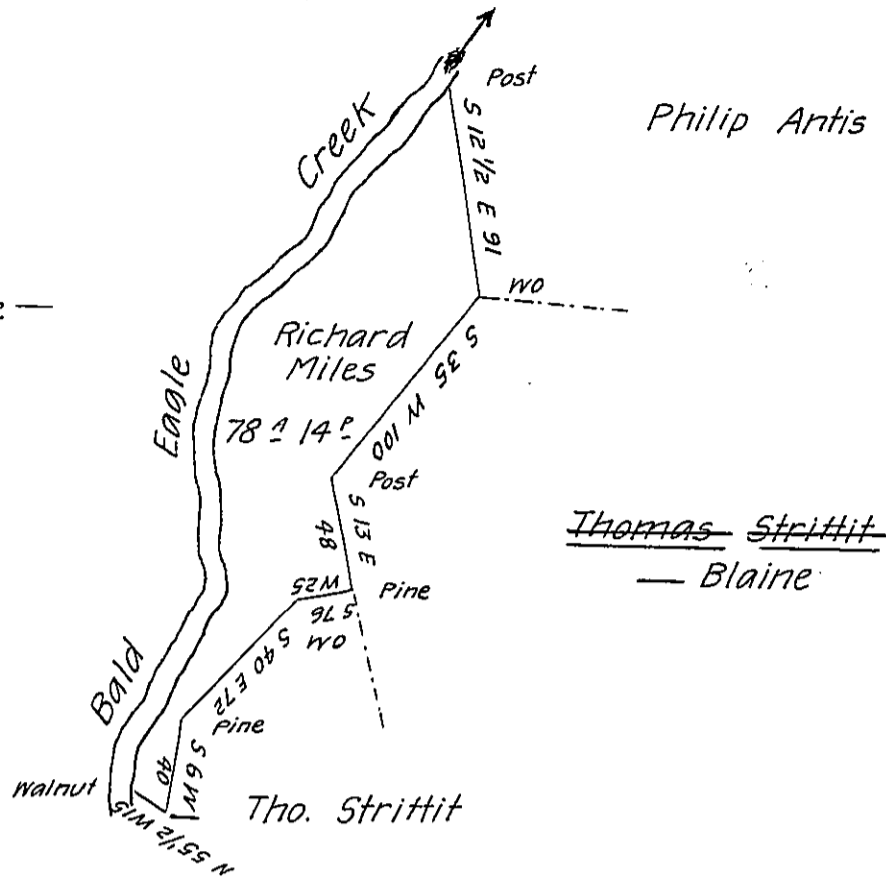


Courses & Dist.
down Bald Eagle —

N 22 1/2 E 90
N 1 3/4 W 114
N 36 1/2 E 140
344



R. Malone

A draught of a tract of land situate in Spring Township in Centre County containing seventy eight acres 14 perches & the usual allowance of Six P. Cent for roads surveyed for Richard Miles November 26th 1802 in pursuance of a Warrant dated Jan^y 26th 1797 ~~for 90 ac~~

James Harris D. S.

To Samuel Cochran Esq^r
Surv^r Gen^l

IN TESTIMONY that the above is a copy of the original remaining on file in the Department of Internal Affairs of Pennsylvania, made conformably to an Act of Assembly approved the 16th day of February, 1833, I have hereunto set my Hand and caused the Seal of said Department to be affixed at Harrisburg, this first day of February 1906.

Joac^o B. Brown
Secretary of Internal Affairs.